



PITLOCHRY  
FESTIVAL  
THEATRE



# SUMMER SEASON 2024

# CONTENTS

1	<b>Welcome</b>
2 - 5	<b>Auditorium</b>
6 - 7	<b>Studio</b>
8 - 9	<b>Amphitheatre</b>
10 - 11	<b>Concerts</b>
12	<b>Special Events</b>
13	<b>Activities for You</b>
16 - 18	<b>Summer Diary</b>
19	<b>Seating Plans</b>
20	<b>Festival Memberships</b>
21	<b>Explorers Garden</b>

Pitlochry Festival Theatre  
is a Company Limited by  
Guarantee and registered in  
Scotland Number SC029243.  
Scottish Charity Number SC013055.

Thanks to



## WELCOME

We're thrilled to share our Summer Season 2024 with you. We look forward to seeing you at Pitlochry Festival Theatre or one of our partner venues this year. We're excited to be making some wonderful new shows and can't wait to welcome you.

We pride ourselves on being a Theatre for a Lifetime and are committed to your comfort no matter what age or stage you are in life. That's why this Summer, you'll notice even more access performances including our Relaxed and Dementia-Friendly Performances. There's also our Audience Matinee Club that you can join. This will happen at various times throughout the season and provides an opportunity for you to get to know new people, especially if you're coming to the Theatre on your own.

At Pitlochry Festival Theatre, we thrive on growing three things: plays, plants, and people (not necessarily in that order!). As well as being able to see lots of productions this year, you'll also have the opportunity to venture into our beautiful Explorers Garden, join a theatre group or take part in one of our many Artist Development activities.

All information can be found online or by talking to someone in our box office.

We're continuing to do work online and go out and about as well. You'll find us performing at other theatres and we'll be visiting more schools, community groups and residential homes this year. Keep your eyes peeled and give us a wave!

Thank you for supporting your theatre and we look forward to welcoming you inside, outside or online!

**Elizabeth Newman**  
Artistic Director





## FOOTLOOSE

31 May - 26 September  
2pm & 7.30pm

Revisit the '80s with *Footloose*, the story of Ren McCormack, a teenage boy from Chicago, who moves with his mother, to a small farming town, after his father abandons them. Ren is prepared for the adjustment to his new high school, but what he isn't prepared for is a ban on dancing by the town preacher, Reverend Shaw Moore.

With the help of Ariel, the Reverend's rebellious daughter, and Willard, a local lad who becomes his best friend, Ren convinces the Reverend to let the teenagers dance, and in the process helps the town to heal from a tragedy that affected them all. This award-winning musical features the songs *Footloose* by Kenny Loggins and *Let's Hear It for the Boy* by Tom Snow and Dean Pitchford.

Stage adaptation by  
Dean Pitchford and Walter Bobbie

Based on the original screenplay by  
Dean Pitchford

Music by Tom Snow      Lyrics by Dean Pitchford

Additional music by  
Eric Carmen, Sammy Hagar,  
Kenny Loggins and Jim Steinman

*Footloose* is presented by arrangement  
with Concord Theatricals Ltd

A co-production  
with New Wolsey  
Theatre



## BEAUTIFUL THE CAROLE KING MUSICAL

7 June - 28 September  
2pm & 7.30pm

Carole King, the chart-topping music legend, was an ordinary girl with an extraordinary talent. She fought her way into the record industry and sold her first hit, *Will You Love Me Tomorrow*, when she was just seventeen. By the age of twenty, she was writing number one hits for the biggest acts in rock 'n' roll, including The Drifters, The Shirelles, Aretha Franklin and The Monkees.

Her greatest challenge was to find her own voice and step into the spotlight. *Beautiful* is the untold story of Carole King's journey from schoolgirl to superstar. It charts her relationship with husband and song-writing partner Gerry Goffin, their close friendship and playful rivalry with song-writing duo Barry Mann and Cynthia Weil, and her remarkable rise to stardom.

Book by  
Douglas McGrath

Words and music by  
Gerry Goffin & Carole King,  
Barry Mann & Cynthia Weil

Music by arrangement with  
Sony/ATV Music Publishing

Orchestrations, vocal and  
incidental music arrangements by  
Steve Sidwell

Presented by  
arrangement with  
Music Theatre International





## SENSE AND SENSIBILITY

21 June - 27 September  
2pm & 7.30pm

Marianne Dashwood, wild and impulsive, falls dangerously in love with the charming but roguish John Willoughby, ignoring her sister Elinor's warning that her impulsive behaviour leaves her open to gossip and innuendo.

Whilst Marianne wears her heart on her sleeve, Elinor suffers her own private heartbreak but conceals her true feelings, even from those closest to her.

Will the sisters learn that sense must mix with sensibility if they are to find personal happiness in a society where status and money govern the rules of love?

One of English literature's most beloved classics is given a contemporary makeover in a fresh and funny adaptation by award-winning Scottish playwright Frances Poet.

Written by  
Jane Austen  
Adapted by  
Frances Poet

World Première

A Pitlochry Festival  
Theatre and OVO  
Production



## SHIRLEY VALENTINE

4 July - 28 September  
2pm & 7.30pm

*Shirley Valentine* is a celebration of women, freedom and what it means to find yourself again. We meet Shirley, a bored, middle-aged wife and mother as she contemplates what has happened to her youth. Her children are all grown up and she's stuck at home with only the kitchen wall to talk to. Shirley dreams of a better life, free from the chains of her domestic boredom and an unappreciative husband.

When her best friend asks her to come on holiday to Greece, she packs her bags and heads off for a fortnight of rest and relaxation. There she meets a local fisherman, rediscovers herself, and the happiness she has been missing. Now, she has a big decision to make.

Written by  
Willy Russell

Sally Reid will be playing the role of Shirley Valentine, for which she received an Outstanding Performance award from the Critics' Awards for Theatre in Scotland.



## NAN SHEPHERD: NAKED AND UNASHAMED

24 May - 6 July  
2.30pm & 8pm

Following the success of their podcast series, *A Journey with Nan Shepherd*, award-winning Firebrand Theatre Company's richly entertaining, funny and moving new play uncovers the extraordinary, unconventional woman behind the glamorous portrait on the Scottish five-pound note.

Directed by Richard Baron (*Chicago, Heritage, The Last Witch*), the play reveals the untold story of how Nan Shepherd's experiences as author, teacher, hillwalker and lover helped shape Scotland's recent literary history, while also solving the mystery of why her ground-breaking masterpiece, *The Living Mountain*, lay forgotten in a drawer for over 30 years.

Written by  
Richard Baron  
and Ellie Zeegen

World Première

A co-production with  
Firebrand Theatre Company  
and in association with  
Dr Kerri Andrews



Image © Estate of Nan Shepherd



## THE BRENDA LINE

15 August - 18 September  
2.30pm & 8pm

It's early evening in a middle-of-nowhere town when Karen walks into a call centre to begin her first night shift as the youngest Samaritan in the country. She's decided she needs to help people, and maybe write a best-selling novel in the process, but what she hadn't expected was Anne - her elderly shift partner, and the evening's resident 'Brenda'...

Inspired by real-life events in the author's mother's teenage life, as well as the lesser-known history of the Samaritans in the 1970s and '80s, *The Brenda Line* is a story about women, love, and listening.

The Samaritans was one of the first phone helplines dedicated to reduce feelings of isolation and disconnection. It was built on the principles of being non-judgmental and there to listen. But what happens when a caller is looking for more than conversation?

Written by  
Harry Mould

World Première

This is Harry Mould's debut play and is set in the Theatre's innovative and intimate Studio.



## THE SECRET GARDEN

12 July - 22 August  
2pm

When orphaned Mary Lennox comes to live at her uncle's great house on the Yorkshire Moors, she finds it full of secrets. At night, she hears crying down one of the long corridors. She tracks it down to her cousin Colin, who has spent his entire life in bed, unable to walk.

One day, Mary finds a key that leads her to a garden held locked for years and completely overgrown. Mary and her friend Dickon nurse the garden back to life, returning joy to the house and those living there.

This delightful adaptation is set in the Theatre's beautiful Amphitheatre.

Written by  
Frances Hodgson Burnett

Adapted by  
Elizabeth Newman

Thank you to the Cruden Foundation  
for supporting *The Secret Garden*

## DIDO AND AENEAS

31 August - 15 September  
1pm & 5pm

Dido, the queen of Carthage, falls in love with Aeneas, the Trojan prince, after offering him safe harbour on his journey home. Dido wrestles with her feelings for him and her duties as queen. Encouraged by her sister Belinda, she accepts Aeneas's marriage proposal.

Tragically, a sorceress plots to separate them by summoning a great storm. She tricks Aeneas into returning home, forsaking Dido who dies from heartbreak.

A Scots and Gaelic language production, *Dido and Aeneas* packs vibrant, insistent drama into a moving interpretation of the opera.

This production blends professional opera singers with the powerful voices of a community company.

Composed by  
Henry Purcell

Libretto by  
Nahum Tate

Scots Translation by  
Dr Michael Dempster

Gaelic Translation by  
Marcas Mac an Tuairneir

A co-production with  
Scots Opera Project



Thank you to the Cruden Foundation  
for supporting *Dido and Aeneas*

# CONCERTS

## AUDITORIUM

See pages 16-18 for performance dates



### 15 June 7.30pm The Ultimate Tribute to ABBA

Calling all Dancing Queens, this is your night to say, *Thank you for the Music!* This international smash-hit tribute show brings all ABBA's number one hits to the stage in a production like no other. The hugely popular show, now in its 21st year, with a brand-new show for 2024, combines the unmistakable harmonies, colourful costumes, and dazzling performances by our all-star cast.

Join us for the party of the year as we bring you all the hits, including *Waterloo*, *Dancing Queen*, *Mamma Mia*, and many many more!

*Thank you for the Music!* For without a song or a dance what are we.



### 10 August 7.30pm The Ultimate Celebration of Queen

Have your finest hour, or two, as we bring you *Radio GaGa*. Be part of a night like no other as we bring you the concert you've been dreaming of! The ultimate celebration of the biggest band to have ever graced the stage – Queen. Break free with us and shake all over like a jellyfish as *Radio GaGa* recreates two magical hours live on stage, celebrating the magic, fun and showmanship of the band's touring days.

Playing all your favourite hits including: *Don't Stop Me Now*, *I Want to Break Free*, *We Are the Champions*, *We Will Rock You*, *Bohemian Rhapsody* and more. Join us as we say, 'Radio, someone still loves you!'



### 6 July 7.30pm Party like it's 1999

Get ready as we spice up your life, taking you back for good and hit you one more time with the ultimate 90s party night out!

The music of a generation brought to life with fantastic vocals, genius costumes and of course; all the dance moves you know and love.

From Take That to Oasis, Spice Girls to Supergrass, get ready for this non-stop 90s extravaganza as we set you free and pump up the jam with songs by Britney Spears, Ricky Martin, The Vengaboys, Bryan Adams, Boyzone, Shania Twain, Aqua, Lou Bega, Eternal, Bewitched, Wet Wet Wet, Ace of Base, 2 Unlimited, S Club 7, Gina G, Pulp, Blur, Shampoo, and many more.



### 1 September 7.30pm Take That's Greatest Hits Live on Stage

*Re-Take That* is the ultimate Take That party night, bringing the world's biggest boy band's greatest hits to life – live on stage.

The stars are coming out tonight, and lighting up the sky tonight for you as, for one night only, the boys are 'Back for Good'!

All of Take That's million sellers plus Robbie Williams' massive solo hits feature – including *Greatest Day*, *Let Me Go*, *Shine*, *Never Forget*, *Let Me Entertain You*, *Rock DJ*, *Love My Life*, *Angels* and more. Created by Take That fans, for Take That fans – a lot of love and affection has been invested in musicianship, costumes, dance routines, stage craft and production values to provide audiences with the greatest day of our lives.



### 19 July 7.30pm The Shake it Up Baby Tour

Come together, right now – for the sensational *The Magic of the Beatles*. The incredible cast not only look and sound like John, Paul, George, and Ringo, they also generate that famed, incredible excitement of The Beatles – with the Fab Four's unique sense of humour thrown in for good measure too.

Enjoy *She Loves You*, *A Hard Day's Night*, *Help!*, *I Feel Fine*, *Sgt Pepper's Lonely Hearts Club Band*, *Hey Jude*, *Here Comes the Sun*, *Get Back* and more. Playing to ecstatic sell-out audiences all over the world – *The Magic of the Beatles* is all you need for an unforgettable night of million-selling memories.



### 15 September 7.30pm Aly Bain and Phil Cunningham

Together Aly Bain and Phil Cunningham have established themselves as the epitome of excellence in the world of traditional music.

With their musical magic and quick-witted humour they will pull your emotional strings one moment and have you falling off the seat with laughter the next.

Join us to hear Phil Cunningham's astonishing dexterity on accordion, and Aly Bain's impassioned fiddle playing.

# SPECIAL EVENTS



## SHERPAS SPEAK

**STUDIO 29 May 2 & 7.30pm**

A unique insight into the lives of the Sherpa people. Come and spend an afternoon or evening with our guest speakers, Cameron McNeish, Fiona Valpy and James Lamb as they talk us through their connections with the Himalayas.

In aid of the Little Sherpa Foundation and Explorers Garden.



## BANFF CENTRE MOUNTAIN FILM FESTIVAL WORLD TOUR

**AUDITORIUM 19 October**

**Matinee Blue Film 2pm Evening Red Film 7pm**

Experience an unforgettable evening of thrilling adventure – up on the big screen!

The Banff Mountain Film Festival features a brand-new collection of short films filled with extreme journeys, untamed characters and captivating cinematography! Join the world's top adventure filmmakers and thrill-seekers as they climb, ski, paddle and ride into the wildest corners of the planet!

There are two shows, each with a totally different selection of films – the 2024 Blue Film Programme (matinee) and the 2024 Red Film Programme (evening show). Amplify the adventure by coming to both with a two-show discount, available from Box Office.

With free prize giveaways, this is an unmissable event from the world's most prestigious mountain festival – guaranteed to spark your passion for adventure, action and travel!

# ACTIVITIES FOR YOU

Participation, especially in the arts, is an amazing way to empower people to develop their creativity, increase confidence and have fun at the same time.

At the heart of our participation activity is the idea of connection between people, their local communities, and the Theatre.

We want to create extraordinary things together and make a significant positive impact in Pitlochry and beyond.

We offer a range of activities for people of all ages to take part in both at the Theatre and in the community including:

EARLY STAGES

MAKE AND PLAY SUMMER ACTIVITY SESSIONS

YOUTH DANCE

WORKSHOPS IN LOCAL SCHOOLS

DRAMA CLUB AT PITLOCHRY HIGH SCHOOL

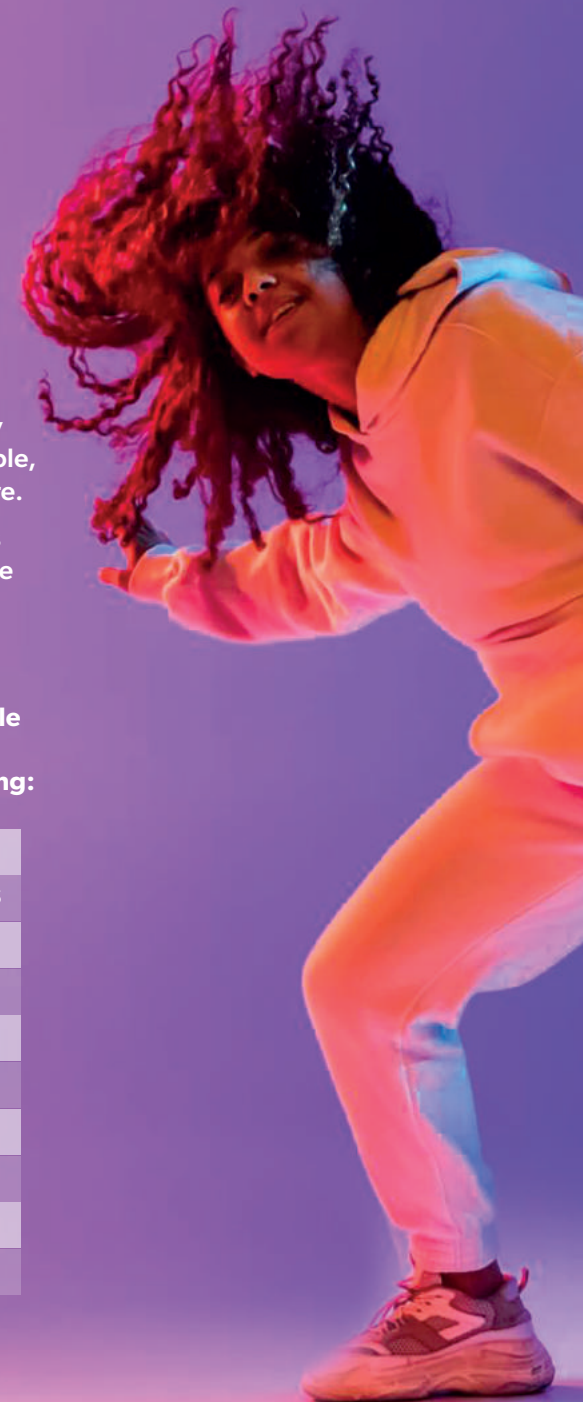
THEATRE SHOW CHOIR

MATINEE CLUB

YOGA CLASSES

SOUND BATH SESSIONS

WOODLAND BREATHING



Visit [pitlochryfestivaltheatre.com/participate](https://pitlochryfestivaltheatre.com/participate)



# SEE MORE. SAVE MORE. SUPPORT MORE.



Our multi-buy discounts allow you to curate your own Pitlochry Festival Theatre experience ensuring you have access to the best seats at the best prices. Select your shows and your discount will be automatically applied.

## SEE HOW MUCH YOU CAN SAVE WITH A MULTI-BUY DISCOUNT\*

Buy tickets for 3 or more shows and save up to

3-5 shows	6+ shows
20%	25%



Attend 6 shows in 6 days from 20 August to 21 September

\*Final discount depends upon chosen performance and price band selected. Offers may be withdrawn or changed at any time. Offer does not include Concerts or Special Events.

## FOOD & DRINK



### CAFÉ

Open 9am - 5pm,  
Mon - Sat



### BREAKFAST ROLLS

Served 9 - 11.30am



### FESTIVAL PICNIC BOX

Tasty and fresh artisanal snacks.  
**Advance booking required.**



### SUMMER SHOW MENU

Treat yourself to a delicious pre-show meal.  
**Advance booking required.**

# SUMMER DIARY

## MAY

Fri 24	Nan Shepherd	8pm
Sat 25	Nan Shepherd	8pm
Sat 29	Sherpas Speak	2pm
	Sherpas Speak	7.30pm
Fri 31	Footloose	7.30pm

## JUNE

Sat 1	Footloose	7.30pm
Thu 6	Nan Shepherd	8pm
Fri 7	Beautiful	7.30pm
Sat 8	Beautiful	7.30pm
Tue 11	Beautiful	7.30pm
Wed 12	Beautiful	2pm
	Nan Shepherd	8pm
Thu 13	Footloose	2pm
	Footloose	7.30pm
Fri 14	Footloose	7pm
Sat 15	Nan Shepherd	2.30pm
	Thank You for the Music	7.30pm
Fri 21	Sense and Sensibility	7.30pm
Sat 22	Sense and Sensibility	7.30pm
Tue 25	Sense and Sensibility	7.30pm
Wed 26	Sense and Sensibility	2pm
	Nan Shepherd	8pm
Thu 27	Sense and Sensibility	2pm
	Beautiful	7.30pm

## JUNE (CONT.)

Fri 28	Footloose	7.30pm
Sat 29	Footloose	2pm
	Nan Shepherd	8pm

## JULY

Thu 4	Shirley Valentine	7.30pm
Fri 5	Shirley Valentine	7.30pm
Sat 6	Nan Shepherd	2.30pm
	90s Live	7.30pm
Tue 9	Shirley Valentine	7.30pm
Wed 10	Shirley Valentine	2pm
Thu 11	Beautiful	7.30pm
Fri 12	The Secret Garden	2pm
	Sense and Sensibility	7.30pm
Sat 13	The Secret Garden	2pm
	Footloose	7.30pm
Tue 16	Footloose	7.30pm
Wed 17	Footloose	2pm
	Beautiful	7.30pm
Thu 18	The Secret Garden	2pm
	Sense and Sensibility	7.30pm
Fri 19	The Magic of the Beatles	7.30pm
Sat 20	The Secret Garden	2pm
	Shirley Valentine	7.30pm
Sun 21	Shirley Valentine	2pm
Tue 23	Sense and Sensibility	7.30pm
Wed 24	Sense and Sensibility	2pm
	Footloose	7.30pm

## JULY (CONT.)

Thu 25	Footloose	2pm
	Beautiful	7.30pm
Fri 26	Beautiful	7.30pm
Sat 27	The Secret Garden	2pm
	Sense and Sensibility	7.30pm
Tue 30	Footloose	7.30pm
Wed 31	The Secret Garden	2pm
	Beautiful	7.30pm

## AUGUST

Thu 1	Beautiful	2pm
	Sense and Sensibility	7.30pm
Fri 2	Footloose	7.30pm
Sat 3	The Secret Garden	2pm
	Footloose	7.30pm
Tue 6	Beautiful	7.30pm
Wed 7	The Secret Garden	2pm
	Footloose	7.30pm
Thu 8	Footloose	2pm
	Sense and Sensibility	7.30pm
Fri 9	Sense and Sensibility	7.30pm
Sat 10	The Secret Garden	2pm
	Radio GaGa	7.30pm
Thu 15	The Brenda Line	8pm
Fri 16	The Brenda Line	8pm
Sat 17	The Secret Garden	2pm
Tue 20	Footloose	7.30pm
Wed 21	The Brenda Line	2.30pm
	Footloose	7.30pm

## AUGUST (CONT.)

Thu 22	The Secret Garden	2pm
	Shirley Valentine	7.30pm
Fri 23	Shirley Valentine	2pm
	Sense and Sensibility	7.30pm
Sat 24	Sense and Sensibility	2pm
	Beautiful	7.30pm
Sun 25	Beautiful	2pm
Tue 27	Shirley Valentine	7.30pm
Wed 28	Shirley Valentine	2pm
	Footloose	7.30pm
Thu 29	Footloose	2pm
	Beautiful	7.30pm
Fri 30	Beautiful	2pm
	Sense and Sensibility	7.30pm
Sat 31	Dido and Aeneas	1pm
	Sense and Sensibility	2pm
	Dido and Aeneas	5pm
	The Brenda Line	8pm

## SEPTEMBER

Sun 1	Dido and Aeneas	1pm
	Re-Take That	7.30pm
Tue 3	Shirley Valentine	7.30pm
Wed 4	Shirley Valentine	2pm
	Sense and Sensibility	7.30pm
Thu 5	Sense and Sensibility	2pm
	Footloose	7.30pm
Fri 6	Footloose	2pm
	Beautiful	7.30pm

## SEPTEMBER (CONT.)

<b>Sat 7</b>	Dido and Aeneas	1pm	
	Beautiful	2pm	
	Dido and Aeneas	5pm	
	The Brenda Line	8pm	
<b>Sun 8</b>	Dido and Aeneas	1pm	
<b>Tue 10</b>	Footloose	7.30pm	
<b>Wed 11</b>	Footloose	2pm	MAC
<b>Thu 12</b>	The Brenda Line	2.30pm	
	Shirley Valentine	7.30pm	●
<b>Fri 13</b>	Shirley Valentine	2pm	
	Beautiful	7.30pm	
<b>Sat 14</b>	Dido and Aeneas	1pm	
	Beautiful	2pm	
	Dido and Aeneas	5pm	
	Sense and Sensibility	7.30pm	
<b>Sun 15</b>	Dido and Aeneas	1pm	
	Aly Bain and Phil Cunningham	7.30pm	
<b>Tue 17</b>	Footloose	7.30pm	
<b>Wed 18</b>	The Brenda Line	2.30pm	
	Beautiful	7.30pm	●
<b>Thu 19</b>	Beautiful	2pm	
	Sense and Sensibility	7.30pm	
<b>Fri 20</b>	Sense and Sensibility	2pm	●
	Shirley Valentine	7.30pm	
<b>Sat 21</b>	Shirley Valentine	2pm	●
	Footloose	7.30pm	
<b>Sun 22</b>	Footloose	2pm	
<b>Tue 24</b>	Beautiful	7.30pm	
<b>Wed 25</b>	Beautiful	2pm	●
	Footloose	7.30pm	

<b>Thu 26</b>	Footloose	2pm	
	Sense and Sensibility	7.30pm	
<b>Fri 27</b>	Sense and Sensibility	2pm	
	Shirley Valentine	7.30pm	
<b>Sat 28</b>	Shirley Valentine	2pm	MAC
	Beautiful	7.30pm	

## OCTOBER

<b>Fri 19</b>	BANFF Film Festival	2pm & 7pm	
---------------	---------------------	-----------	--

**MAC** *Matinee Audience Club*  
For more information, visit  
[pitlochryfestivaltheatre.com/matinee-club](http://pitlochryfestivaltheatre.com/matinee-club)

Access performances key:

- Audio
- BSL
- Captioned
- Relaxed and Dementia Friendly

# BOOK YOUR SEATS NOW!

BOX OFFICE  
**01796 484 626**

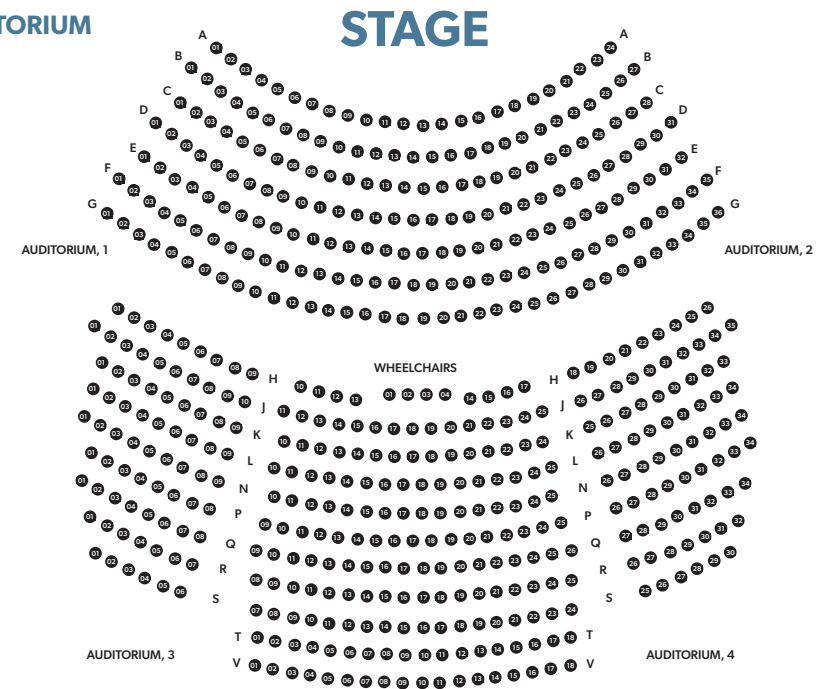
ONLINE



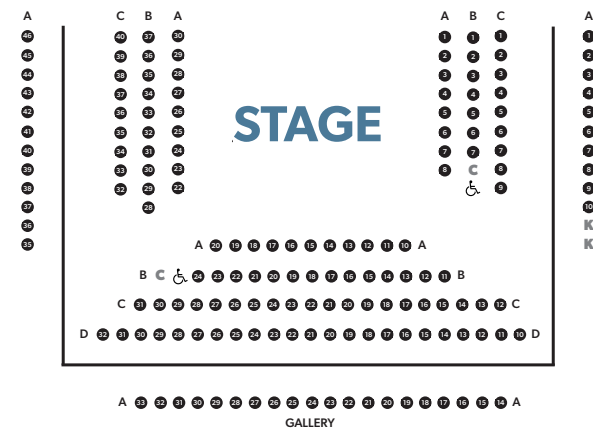
[pitlochryfestivaltheatre.com](http://pitlochryfestivaltheatre.com)

## SEATING PLANS

### AUDITORIUM



### STUDIO



# FESTIVAL MEMBERSHIPS

Become a Member to support Pitlochry Festival Theatre and enjoy popular benefits, including early booking and discounts on tickets and retail.

Choose the level of membership that's right for you

## FESTIVAL FRIENDS

£40 annually

- Seven days priority booking
- Save 10% on two tickets per show
- 10% off retail purchases
- Receive season brochure and announcements first
- e-Newsletters

## FESTIVAL CIRCLE

£150 annually

- Friends' benefits, PLUS
- Household membership
  - 14 days priority booking
  - Save 15% on four tickets per show
  - Save 10% on all Café purchases
  - Recognition in printed programme

### There are many ways to support us

Every member and donor to Pitlochry Festival Theatre impacts our community by supporting access, learning, and participation programmes for all ages. Find out more about the benefits of giving more than £150 or leaving a legacy by emailing [membership@pitlochryfestivaltheatre.com](mailto:membership@pitlochryfestivaltheatre.com) or call 01796 484623.

**Become a member today**  
– call the Box Office  
on 01796 484626  
or scan the code.



# EXPLORERS GARDEN

Seven acres of stunning woodland garden



Experience art in nature, performances, or a moment of reflection in our woodland space.

### GARDEN ENTRY

1 May – 31 October

10am – 5pm Mon – Sat  
(last entry 4pm)

Children under 12 FREE with  
an accompanying adult

RHS members: 1 FREE entry  
with full paying visitor

### MONTHLY GARDEN TOUR

Take a walk with one of  
the gardening team for  
a seasonal look at the  
garden's progress and  
what's in bloom.

Last Thursday  
of the month  
from 30 May - 31 Oct

11am (meet at the  
entrance 10mins before)

### NEPALESE SHERPA VILLAGE EXHIBITION

Based in the Pavilion  
and in the Himalayan  
section of the garden  
an exhibition of life  
and community in a  
Nepalese village.

14 May - 15 June

10am – 5pm Mon – Sat  
(last entry 4pm)

Garden entry ticket  
includes exhibition



# THE SOUND OF MUSIC

15 NOV TO 22 DEC 2024



**BOOK  
NOW**   
**01796 484 626**  
[pitlochryfestivaltheatre.com](http://pitlochryfestivaltheatre.com)