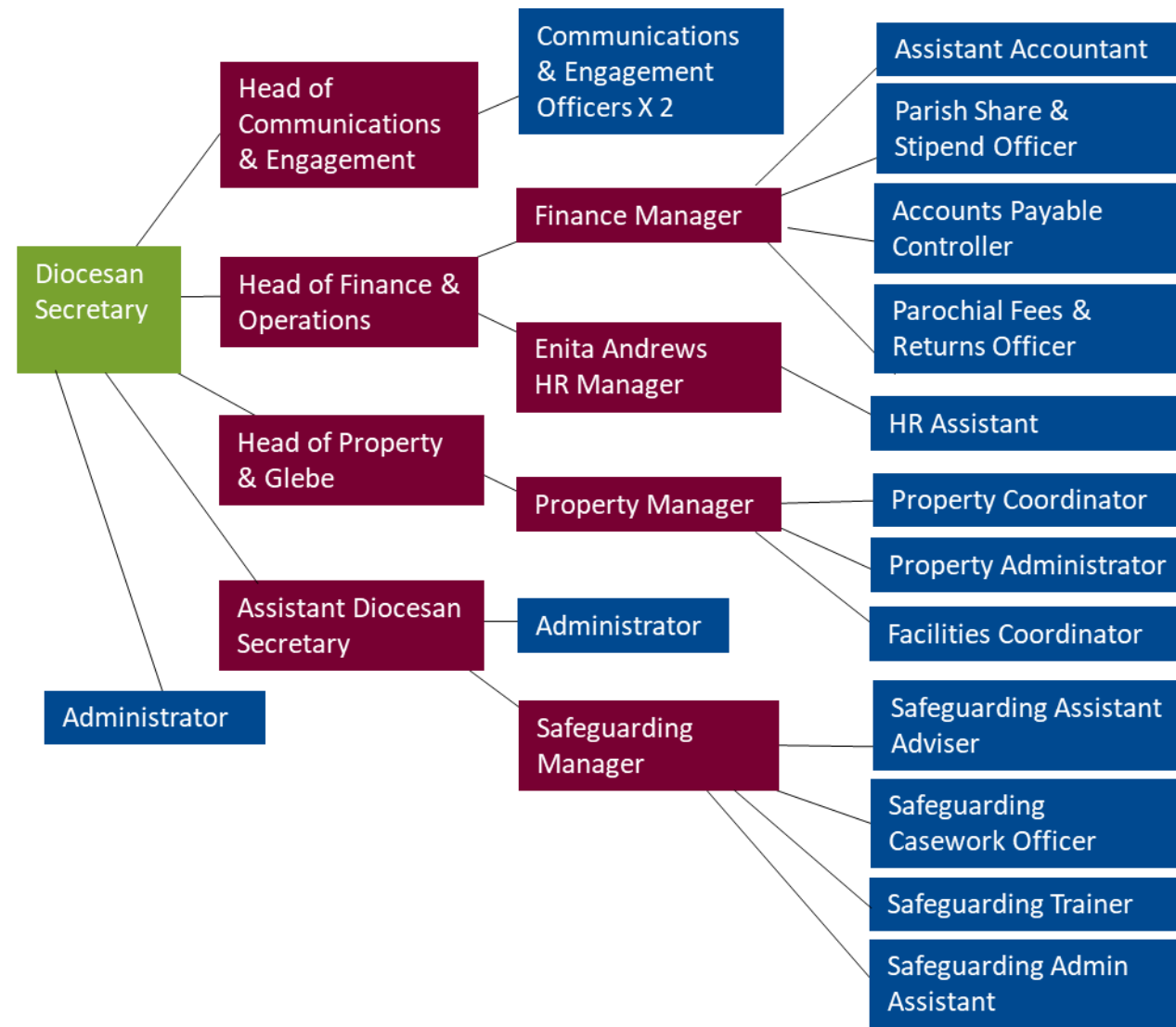
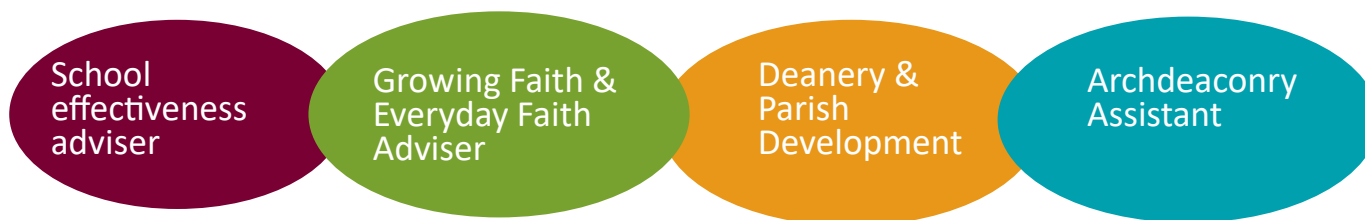


Central Services



An archdeaconry way of working

In order to deliver our support at a local a level as possible, we have increased the number of archdeaconry-based roles.



For the most up to date contact information for all support service staff and other key contacts go to: bathandwells.org.uk/diocesan-contacts-list 9 Mar 22

Diocese of Bath & Wells Support Services

Reshaped to support our schools, our parishes and deaneries in mission, and support people in their ministry.

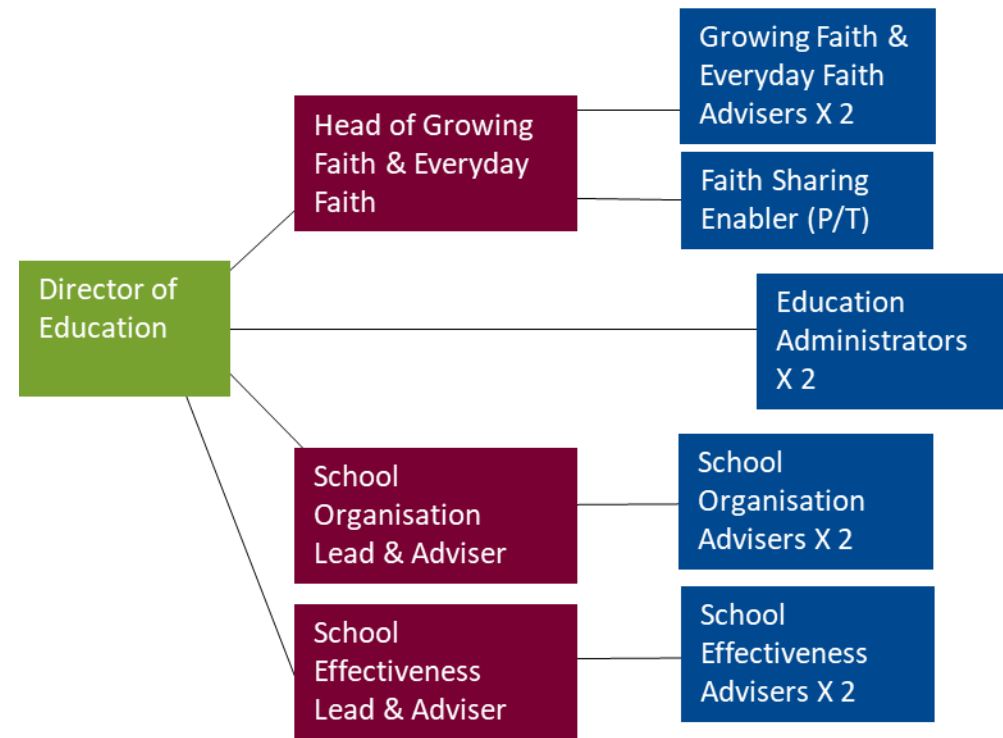


Three functions report to the Diocesan Secretary:

- Mission Support & Ministry Development - Deanery & Parish Support, Mission Development and Ministry Training & Vocations teams
- Education & Faith Development—Education and Growing Faith & Everyday Faith teams
- Central Services—Secretariat, Safeguarding, Finance & Operations, Communications and Property teams

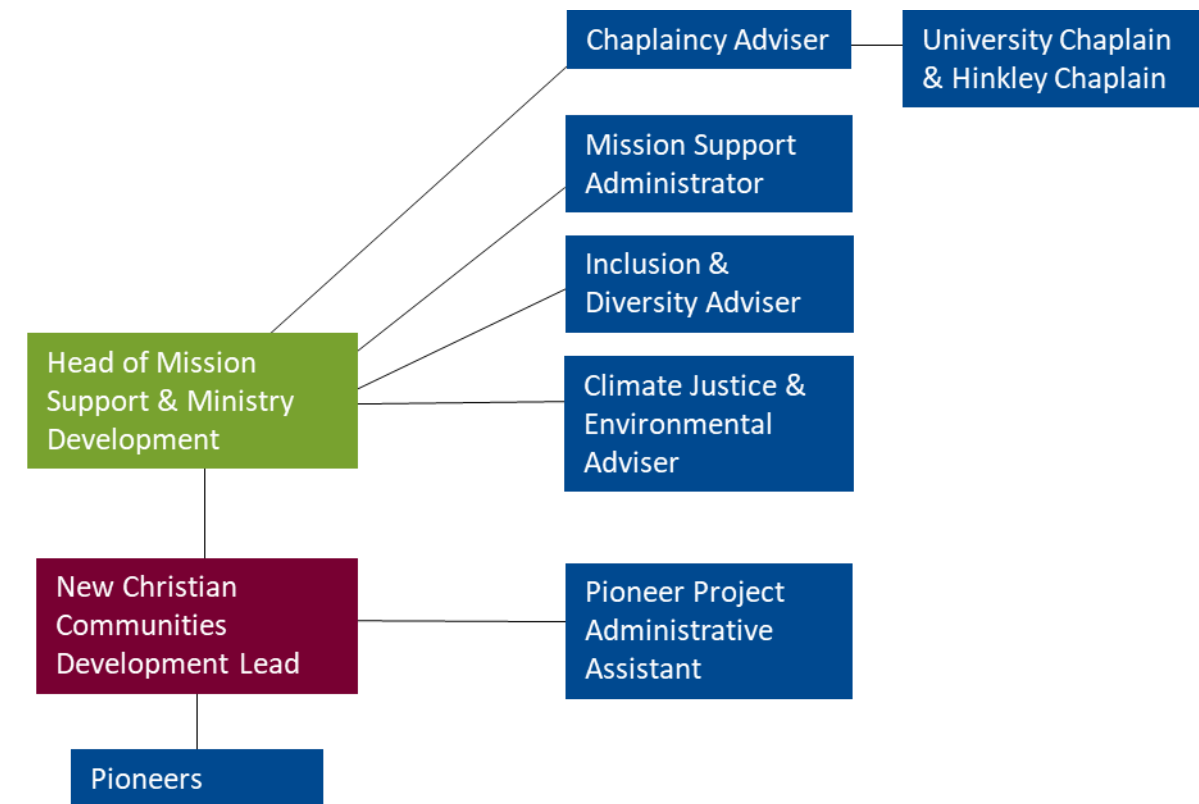
For the most up to date contact information for all support service staff and other key contacts go to: bathandwells.org.uk/diocesan-contacts-list

Education



“The structure changes support the desire to bring children and young people into the heart of the diocese, which ties into the vision of the Church of England to become younger and more diverse.”
Ed Gregory, Director of Education

Mission Development team



“Mission takes place in the parishes and deaneries and out there in the communities so we have reorganised to greatly increase the capacity for deanery and parish support.”
Charlie Peer, Head of Mission Support and Ministry Development

Mission Support & Ministry Development

Deanery & Parish Support team



Ministry Training & Vocations team

